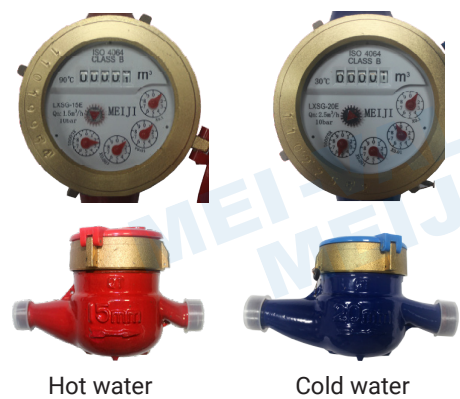


SPECIFICATION

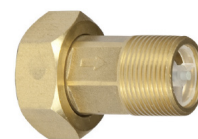
Size: DN 15mm ~ 50mm, Material of body: Ductile cast iron, Coating: Blue & red epoxy power coating, Connection: BS21, ISO7, ASMEB1.20.1
Option: Non-return valve inside brass connectors.



Hot water

Cold water

Fig.1101



Option: Non-return valve

PRESSURE/TEMPERATURE RATINGS	
Working pressure	10 bar
Testing Pressure	Shell: 15bar
Working temperature	≤30°C for Cold water (blue color) ≤90°C for Hot water (red color)
Suitable Media	Cold Water & hot water

PRODUCTION DESCRIPTION

This range of water meter is using to measure the total quantity of cold (hot) potable water which consumed in household or a resident unit, passing through the pipeline compliance with standards: ISO 4064 Class B

Feature: Dry-dial, magnetic drive, Resistance to exterior magnet interference

Multi-jet : Selected high quality materials for steady & reliable characteristic

Vacuum sealed register ensures the dial kept free from fog and keep the reading clear in a long term service

Measuring accuracy conform to ISO 4064 class B Standard. Universal Use. Easy for Interchange & maintenance.

MAIN TECHNICAL DATE

Meter size (mm)	Class	Qs (Qmax) Overload Flow	Qp (Qn) Nominal Flow	Qt Transitional Flow	Qmin Min Flow	Min Reading Lectura	Max Reading Lectura
		m3 /h		1/h		m3	
15	A	3	1.5	150	60	0.0001	99999
	B						
20	A	5	2.5	250	100	0.0001	99999
	B						
25	A	7	3.5	350	140	0.0001	99999
	B						
32	A	12	6	600	240	0.0001	99999
	B						
40	A	20	10	1000	400	0.001	99999
	B						
50	A/B	30	15	4500/3000	1200/450	0.001/0.01	99999

INDICATING ERROR

At low zone is ± 5% from minimum flow rate (qmin) to transitional flow rate (qt) exclusive boundary

At high zone is ± 2% from transitional flow rate (qt) to overload flow rate (qs)

DIMENSIONS AND WEIGHT

Meter size	L	B	H	Connecting Thread	Weight
(mm)	Length (mm)	Width (mm)	Height (mm)	D	kg
15	165/190	99	104	G3/4" B	1.5/1.6
20	190/195	99	106	G1" B	1.7/1.8
25	260/225	104	120	G1 1/4" B	2.6/2.4
32	260/230	104	120	G1 1/2" B	2.8/2.7
40	300/245	125	155	G2" B	5.4/4.5
50	300/200	125/175	155/250	G2 1/2" B/G2" B	7.2/12