

SPECIFICATION

Type: Pilot control valve, Working Pressure: 16/25 bar.
 Meet standards BS EN 1074-5, ISO 5208, BS EN 12266.1, BS EN 558-1
 Flanged to JIS 10/16 K, BS 4504 PN 16/25, ANSI #125/150

- Throttles to maintain constant level in reservoir, tank or pond.
- Throttles open when level drops/Throttles closed when level rises.
- Modulating Float control is Remote mounted (field installed).
- Adjustable Closing Speed.
- Horizontal installation.

PRESSURE/TEMPERATURE RATINGS

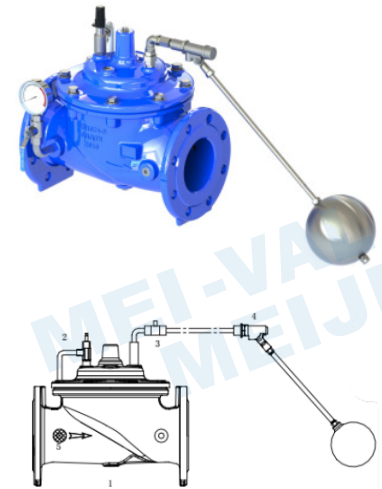
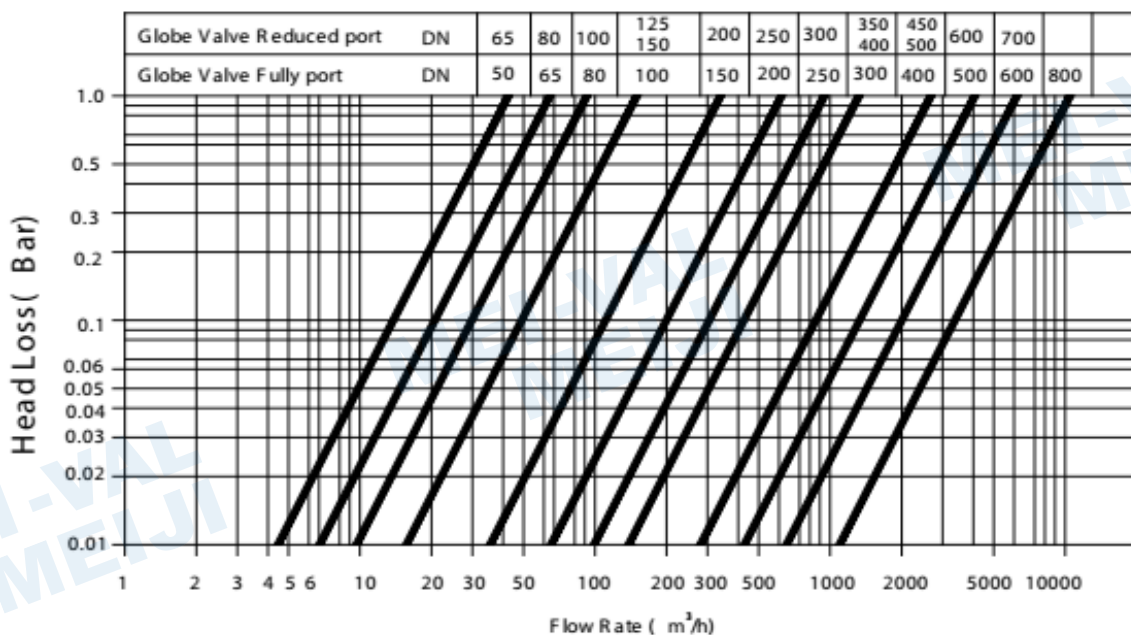
Working pressure	16/25 bar
Testing Pressure	Shell: 24/37.5 bar
Working temperature	-10°C to 80°C
Suitable Media	

Function:

- When water level reaches high water level, the float pilot will shuf off and close the main valve.
- Whenever the water level drops, the float pilot starts to open and main valve opens.

Points to consider: Minimum differential pressure 15 psig.

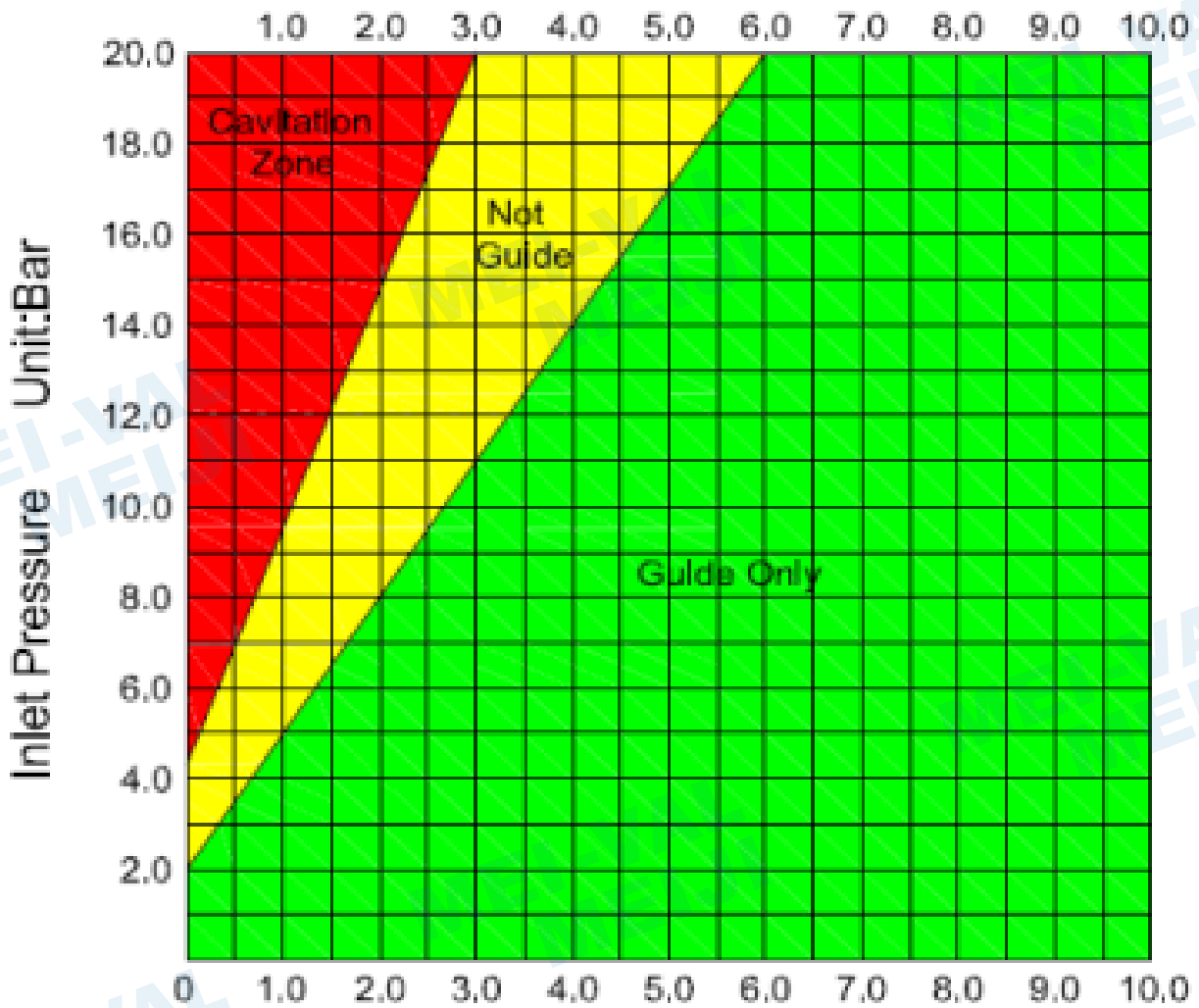
Head Loss Curve



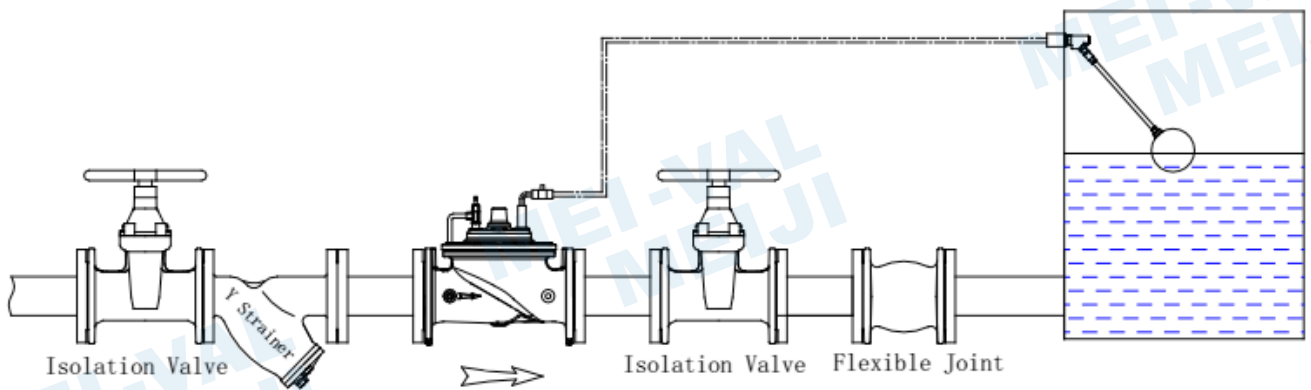
STANDARDS COMPONENTS

1. Main valve
2. Need valve
3. Ball valve
4. Float pilot

Cavitation

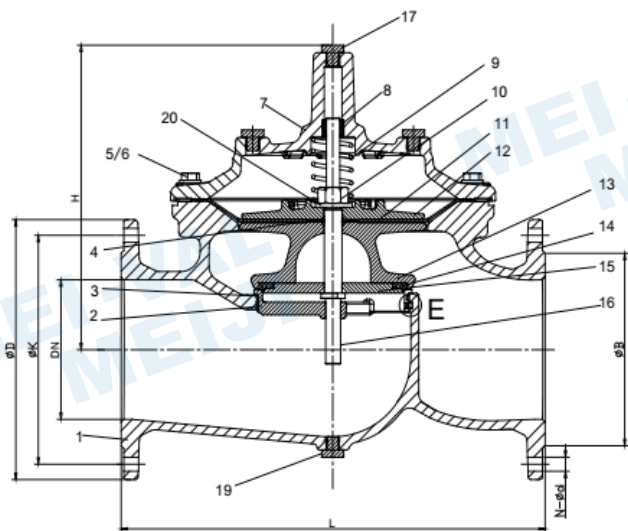


Installation



The main valve include: Main valve + Float Pilot

Material & dimension of Main valve DN 50-350mm



Parts List

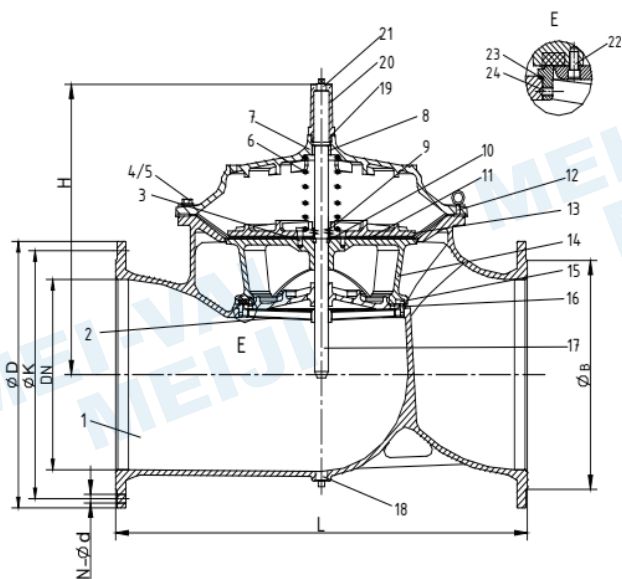
No.	Description	Material	Standard
1	Body	Ductile Iron	GJS 500-7
2	Seat	Stainless Steel	AISI 304/316
3	O-ring	Rubber	NBR
4	O-ring	Rubber	NBR
5	Bolt	Stainless Steel	A2/A4
6	Washer	Stainless Steel	A2/A4
7	Bonnet	Ductile Iron	GJS 500-7
8	Bush	Bronze	C61900
9	Spring	Stainless Steel	AISI 304/316
10	Caulking Nut	Stainless Steel	A4
11	Diaphragm	Nylon Reinforced Rubber	EPDM +Nylon Fabric
12	Fixing holder	Ductile Iron	GJS 500-7
13	Disc Holder	Ductile Iron	GJS 500-7
14	Seal	Rubber	EPDM
15	Seat Retainer	Stainless Steel	AISI 304/316
16	Stem	Stainless Steel	AISI 304/316
17	Plug	Stainless Steel	AISI 304/316
18	Screw	Stainless Steel	A2/A4
19	Plug	Stainless Steel	A2/A4
20	Washer	Stainless Steel	A2/A4

Dimension

Unit :mm

DN	L	H	øD		øK		N-øD		N-øB	
			PN16	PN25	PN16	PN25	PN16	PN25	PN16	PN25
50	230	177	165	165	125	125	4-ø19	4-ø19	ø99	ø99
65	290	202	185	185	145	145	4-ø19	8-ø19	ø118	ø118
80	310	219	200	200	160	160	8-ø19	8-ø19	ø132	ø132
100	350	243	220	235	180	190	8-ø19	8-ø23	ø156	ø156
125	400	243	250	270	210	220	8-ø19	8-ø28	ø156	ø156
150	480	333	285	300	240	250	8-ø23	8-ø28	ø211	ø211
200	600	428	340	360	295	310	12-ø23	12-ø28	ø266	ø274
250	730	478	405	425	355	370	12-ø28	12-ø31	ø319	ø330
300	850	538	460	485	410	430	12-ø28	12-ø31	ø370	ø389
350	980	550	520	555	470	490	16-ø28	16-ø34	ø429	ø448

Material & dimension of Main valve DN 400-800mm



Parts List

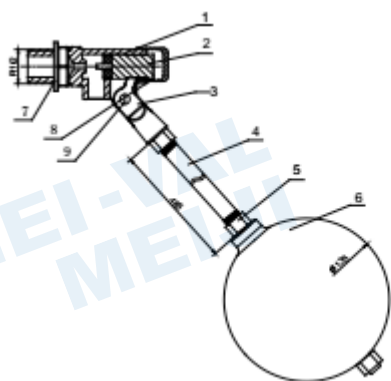
No.	Description	Material	Standard
1	Body	Ductile Iron	GJS 500-7
2	Seat	Stainless Steel	AISI 304/316
3	Screw	Stainless Steel	A2/A4
4	Screw	Stainless Steel	A2/A4
5	Screw	Stainless Steel	A2/A4
6	Spring	Stainless Steel	AISI 304/316
7	Bonnet	Ductile Iron	GJS 500-7
8	Bush	Bronze	C61900
9	O-ring	Rubber	NBR
10	Fix Washer	Bronze	C61900
11	Diaphragm	Nylon Reinforced Rubber	EPDM +Nylon Fabric
12	Eye Bolts	Carbon Steel	1040
13	Fixing Holder	Ductile Iron	GJS 500-7
14	Disc Holder	Ductile Iron	GJS 500-7
15	Seal	Rubber	EPDM
16	Seal Retainer	Ductile Iron	GJS 500-7
17	Stem	Stainless Steel	AISI 304/316
18	Plug	Stainless Steel	AISI 304/316
19	O-ring	Rubber	NBR
20	Cap	Ductile Iron	GJS 500-7
21	Plug	Stainless Steel	AISI 304/316
22	Screw	Stainless Steel	A2/A4
23	O-ring	Rubber	NBR
24	Screw	Stainless Steel	A2/A4

Dimension

Unit :mm

DN	L	H	øD		øK		N-øD		N-øB	
			PN16	PN25	PN16	PN25	PN16	PN25	PN16	PN25
400	1100	670	580	620	525	550	16-ø31	16-ø37	480	503
450	1200	700	640	670	585	600	20-ø31	20-ø37	548	548
500	1250	790	715	730	650	660	20-ø34	20-ø37	610	609
600	1450	930	840	845	770	770	20-ø37	20-ø40	720	720
700	1650	950	910	960	840	875	24-ø37	24-ø43	720	720
800	1850	1260	1025	1085	950	990	24-ø40	24-ø49	900	928

Float Pilot



Part List & Material

No.	Part Name	Material	Standard
1	Body	Stainless Steel	AISI 304
2	Disc	Stainless Steel+Rubber	AISI 304+EPDM
3	Yoke	Stainless Steel	AISI 304
4	Rod	Stainless Steel	AISI 304
5	Nut	Stainless Steel	AISI 304
6	Float	Stainless Steel	AISI 304
7	Jam Nut	Stainless Steel	A2
8	Bonnet	Stainless Steel	A2
9	Screw	Stainless Steel	A2